



FILTRATION SPECIFICATIONS

Filter: Model NCO Filter Housing

Low cost filter housings for flow rates to 100 gpm*

NCO high-capacity bag filters offer an exceptional value for many filtration applications. Compatible with filter bag trade sizes 1, 2, and 12, the NCO can be configured to use our 700 series pleated cartridge.

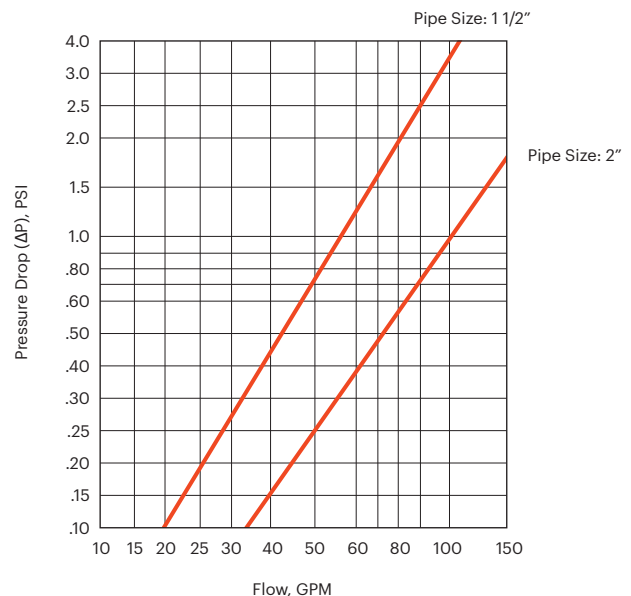
NCO housings provide large dirt-holding capacity combined with a rugged design rated to 150 psi. The housings incorporate an eyenut cover that is easily removed, reducing time spent on bag or cartridge change-out. The NCO bag housing offers versatility for any piping arrangement, utilizing our unistyle design (side and bottom outlet). Two connection sizes are available for both bag and cartridge filters.

The NCO housings are electropolished creating a smooth, easy-to-clean surface. A variety of filter bags or cartridges (rated 0.5 μ absolute to 800 μ nominal) can be utilized in this housing. Keep your filtration process cost effective without sacrificing quality.

FEATURES

- Permanently piped housings are opened without special tools
- Carbon or stainless steel housings
- Covers are o-ring sealed
- O-ring seals: Buna N, EPR, Fluoroelastomer
- 150 psi rated housing
- Heavy-duty basket, over 50% open area
- Uses standard number 1, 2, or 12 size bags and 500 or 700 series cartridges
- Filter selection surface area is: 2.3 square feet (size 1 bag), 4.4 square feet (size 2 bag), 5.6 square feet (size 12 bag), 50 square feet (500 series cartridge), and 100 square feet (700 series cartridge)
- 1 1/2 inch or 2 inch NPT inlet and outlet
- 1/4 inch NPT vent connection
- Adjustable leg assembly

Filter bags are specified and sold separately.



*Based on housing only. Fluid viscosity, filter bag used, and expected dirt loading should be considered when sizing a filter.



Model NCO Housing Code - How to Order

CONFIGURE YOUR PART NUMBER (EXAMPLE: NCO8-30-2P-*-150-C-B-PB)

A

MODEL
NUMBER

B

BASKET
SIZE

C

PIPE
SIZE

D

OUTLET
STYLE

E

PRESSURE
RATING

F

HOUSING
MATERIAL

G

COVER
SEAL

H

BASKET
TYPE

A	MODEL NUMBER	CODE
	NCO8 (#1 & #2 BAG, & 500 CARTRIDGE)	NCO8
	NLCO8 (#12 BAG)	NLCO8
	NCO8135 (700 CARTRIDGE)	NCO8135
	NCO8135 (CONVERTIBLE)	NCO8135

B	BASKET SIZE	CODE
	15-INCH (NCO ONLY)	15
	30-INCH (NCO OR NLCO)	30
	NCO8135	N/A

C	PIPE SIZE	CODE
	1 1/2-INCH FEMALE NPT	1 1/2P
	2-INCH FEMALE NPT	2P

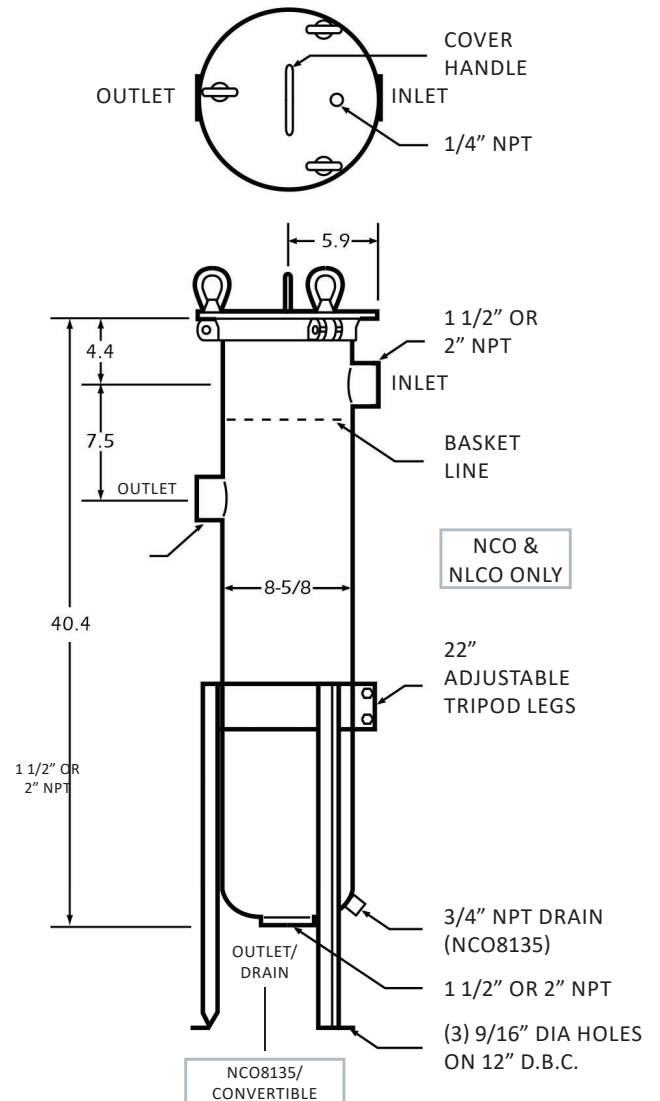
D	OUTLET STYLE	CODE
	SIDE / BOTTOM UNISTYLE	*
	BOTTOM	1

E	PRESSURE RATING	CODE
	150 PSI	150

F	HOUSING MATERIAL	CODE
	CARBON STEEL	C
	304 STAINLESS STEEL	S

G	COVER SEAL	CODE
	BUNA N	B
	ETHYLENE PROPYLENE	E
	FLUOROELASTOMER	V

H	BASKET TYPE	CODE
	FILTER BAG BASKET (NCO OR NLCO)	PB
	700 CARTRIDGE (NCO8135)	700
	CONVERTIBLE (NCO8135)	700PB
	FSI/POLYLOC	POLY



Dimensions are reference only and should not be used for hard plumbing. Consult factory for certified drawings.